



Insight Instant VPN Router

Have you ever wanted to reach the resources that you have in your office such as a file server or a NAS (Network Attached Storage) while you were out on a business errand or a customer visit and found yourself stranded?

Has your business grown and you have a well-established network in your main office, and want your employees in your satellite offices to access the same resources?

NETGEAR has recognized the needs of modern businesses and summarized them in the NETGEAR[®] Insight™ Instant VPN

Router. A business-class router with Instant VPN technology, world's easiest and most user friendly way to remotely connect to your office as if you were there and never left. It has never been this easy to connect multiple offices together as if they were on one and the same network and shared all the same resources.

The VPN connections are encrypted to offer a secure link between your laptop and your office whether you're on the road, at a coffee shop, or in another country. The same is true for site-to-site connections, when you decide to connect

your home, office, or several other locations that need to be interconnected.

In addition to being a high performance router for small to medium-size businesses, it also offers a Stateful Packet Inspection (SPI) firewall supporting over a hundred rules to keep the bad guys out and your business safe.

Finally, with NETGEAR Insight, you have visibility and access to all features from routing to VPN setup, configuration, management and monitoring all from a single pane of glass, on your phone or laptop.

Highlights

Easy and Secure with Insight

The NETGEAR Insight Instant VPN router provides both secure yet easy site-to-site tunnels and secure access for remote clients. Never before has connecting to your office been as easy as "tap and go". Once you connect and onboard your Instant VPN router using either the Insight app or the web portal, you are able to use the Insight mobile app or the laptop client to quickly, easily and securely connect to your office from anywhere in the world and continue working as if you were in the office with full access to all the resources and assets that you have in your office.

Intelligent Router

Including all the routing and network segmentation features that a small business router must have, NETGEAR Insight Instant VPN router will be the

backbone of any modern small business. Gigabit LAN/WAN ports keep your data moving at top speed. With Network Address Translation (NAT) routing and classical routing, all the users in your office can access your broadband connection at the same time. VLAN and inter-VLAN routing are just a few examples of resourcefulness of Insight Instant VPN Router.

Flexible

You can start with one or two Instant VPN routers and as your business grows and your needs increase, you can add more routers to your VPN groups (up to 3 Instant VPN routers) to have a complete meshed network between 3 locations. A VPN group consisting of a single Instant VPN router can handle up to 10 remote users¹ and each additional Instant VPN router can offer up to 10 additional remote users.

Business Grade

The rugged metal unit houses advanced, high-quality electronics, and is backed by the industry's best-in-class 5-Year Hardware Warranty, 90 Day Free Technical Support and 5-Year Next Business Day Replacement.

Support

NETGEAR provides Professional Configuration and Setup Support to assist initial setup if needed, and OnCall 24x7 Support for ongoing technical consultation.

Check Support section in the Technical Specification.

¹ Requires Insight Instant VPN subscription



Insight

Target Applications

Remote VPN Users

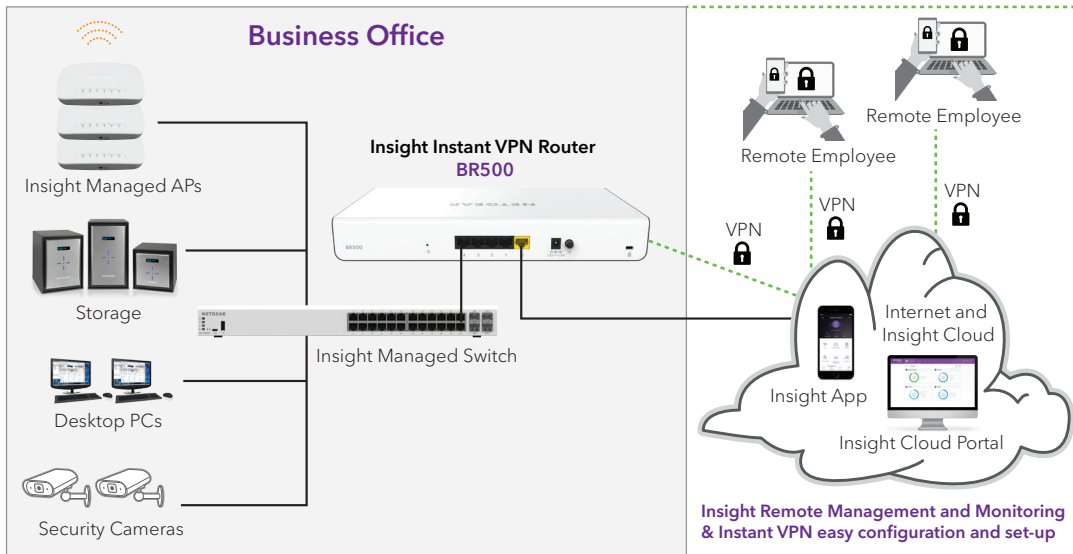


Figure 1.

Up to 10 VPN users can remotely connect to BR500 via a secure encrypted VPN connection and have access to all the resources behind BR500 such as file servers, NAS devices, etc.

Site-to-Site VPN

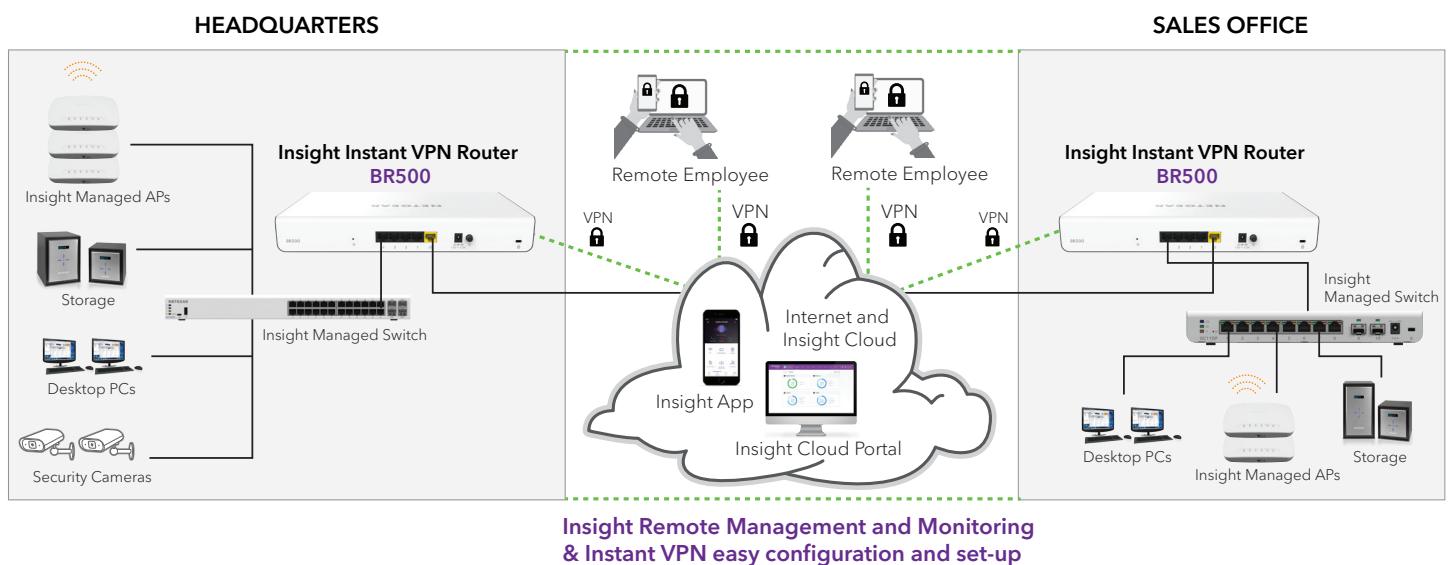


Figure 2.

In this case we have at least two BR500 devices in action. The two of them can create a site-to-site VPN which means they can connect two local LANs and separate networks together as if they were physically connected and co-located. The VPN group now has two BR500 members and the group can now accept up to 20 remote users and these remote users have access to both sites.

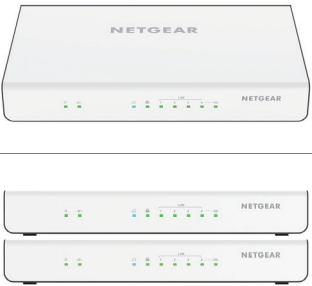

Technical Specifications

FEATURES	BR500	BRK500
Connectivity		
Gigabit Ports WAN/LAN	1/4	1/4
DMZ Interfaces (Configurable)	1	1
IPv6 Support	Yes	Yes
Performance		
LAN-to-WAN Throughput ²	924Mbps	924Mbps
Insight Instant VPN Throughput ²	60Mbps	60Mbps
Maximum Number of VLANs	256	256
Insight Site to site VPN limit	3	3
Insight client to site VPN limit	10 per router	10 per router
Security		
Firewall Functions	Stateful Packet Inspection (SPI), Port/Service Blocking, Denial-of-service (DoS) Prevention, Stealth Mode, Block TCP Flood, Block UDP Flood, WAN/LAN Ping Response Control	Stateful Packet Inspection (SPI), Port/Service Blocking, Denial-of-service (DoS) Prevention, Stealth Mode, Block TCP Flood, Block UDP Flood, WAN/LAN Ping Response Control
Content Filtering (HTTP Only)	Web Keyword Blocking, Trusted Domains	Web Keyword Blocking, Trusted Domains
User Authentication for VPN	NETGEAR Insight SSO	NETGEAR Insight SSO
VoIP SIP ALG	Yes	Yes
Networking		
ISP Address Assignment	DHCP, Static IP Assignment, PPPoE, PPTP	DHCP, Static IP Assignment, PPPoE, PPTP
NAT Modes	1-1, NAT	1-1, NAT
Routing	Static, Dynamic, RIPv1, RIPv2	Static, Dynamic, RIPv1, RIPv2
IPv6 Support	Yes	Yes
DHCP	DHCP Server, DHCP Relay, DNS Proxy	DHCP Server, DHCP Relay, DNS Proxy
DDNS	NETGEAR, No-IP.com, Dyn.com	NETGEAR, No-IP.com, Dyn.com
VLANs	802.1Q	802.1Q
Essential Networking Features	Port Range Forwarding, Port Triggering, DNS proxy, MAC Address Cloning/spoofing, NTP Support, UPnP, Auto Uplink on Switch Ports, L3 Quality of Service (QoS), LAN-to-WAN and WAN-to-LAN (ToS), Bandwidth Profiling	Port Range Forwarding, Port Triggering, DNS proxy, MAC Address Cloning/spoofing, NTP Support, UPnP, Auto Uplink on Switch Ports, L3 Quality of Service (QoS), LAN-to-WAN and WAN-to-LAN (ToS), Bandwidth Profiling
VPN		
IPsec Encryption/Authentication	56-bit DES, 168-bit 3DES, AES (128, 192, 256 bit)/SHA-1, MD5	56-bit DES, 168-bit 3DES, AES (128, 192, 256 bit)/SHA-1, MD5
Key Exchange	IKE, IKEv1, IKEv2, Manual Key, Pre-shared Key, PKI, X.509v3	IKE, IKEv1, IKEv2, Manual Key, Pre-shared Key, PKI, X.509v3
Access Modes	Insight remote access	Insight remote access
VPN Wizard	Insight VPN wizard	Insight VPN wizard
SSL Version Support	SSLv3, TLS1.0	SSLv3, TLS1.0
SSL Encryption Support	DES, 3DES, ARC4, AES (ECB, CBC, XCBC, CNTR)128, 256 bit	DES, 3DES, ARC4, AES (ECB, CBC, XCBC, CNTR)128, 256 bit
SSL Message Integrity	MD5, SHA-1, MAC-MD5/SHA-1, HMAC-MD5/SHA-1	MD5, SHA-1, MAC-MD5/SHA-1, HMAC-MD5/SHA-1

Technical Specifications

FEATURES	BR500	BRK500
SSL Certificate Support	RSA, Diffie-Hellman, Self	RSA, Diffie-Hellman, Self
L2TP Server	Yes	Yes
PPTP Server	Yes	Yes
Management		
Management Options	Insight Cloud	Insight Cloud
Logging	Accepted Packets, Dropped Packets, System, Source MAC filter, Session Limit, Bandwidth Limit, IPsec VPN	Accepted Packets, Dropped Packets, System, Source MAC filter, Session Limit, Bandwidth Limit, IPsec VPN
Log Delivery	Insight logging	Insight logging
Diagnostics	Ping, DNS Lookup, Trace Route	
Maintenance	Save/restore Configuration, Restore to Factory Defaults, Firmware Upgrades via Web Browser, Display Statistics	Save/restore Configuration, Restore to Factory Defaults, Firmware Upgrades via Web Browser, Display Statistics
Hardware		
Processor	Dual-core 1.7GHz CPU with additional dual-core Network Switching Subsystem (NSS) processors	Dual-core 1.7GHz CPU with additional dual-core Network Switching Subsystem (NSS) processors
Flash Memory/RAM	128MB/1GB	128MB/1GB
Major Regulatory Compliance	Environment: RoHS Safety: CE/LVD, cUL EMI: FCC Part 15 Class B, CE mark, C-Tick Class B, VCCI	Environment: RoHS Safety: CE/LVD, cUL EMI: FCC Part 15 Class B, CE mark, C-Tick Class B, VCCI
Temperatures	Operating Temperature: 0° - 45°C (32°-113° F) Storage Temperature: -20° - 70° C (-4° - 158° F)	Operating Temperature: 0° - 45°C (32°-113° F) Storage Temperature: -20° - 70° C (-4° - 158° F)
Humidity	Operating humidity 90% maximum relative humidity, non-condensing Storage humidity 95% maximum relative humidity, non-condensing	Operating humidity 90% maximum relative humidity, non-condensing Storage humidity 95% maximum relative humidity, non-condensing
Electrical Specifications	Power adapter Input localized to regions Output: DC 12V/1.5A	Power adapter Input localized to regions Output: DC 12V/1.5A
Dimensions (W x D x H) cm	31.4 x 18.75 x 4.365	31.4 x 18.75 x 4.365
Dimensions (W x D x H) in	12.36 x 7.38 x 1.72	12.36 x 7.38 x 1.72
Weight kg/lb	1.55/3.41	1.55/3.41
System Requirements	Cable or DSL Broadband Modem, Internet Service, Windows/OSX/Linux/iOS/Android Client Device, Internet Explorer/Firefox/Chrome/Safari Web Browser	Cable or DSL Broadband Modem, Internet Service, Windows/OSX/ Linux/iOS/Android Client Device, Internet Explorer/Firefox/Chrome/Safari Web Browser

Technical Specifications

FEATURES	BR500	BRK500
Hardware Warranty*	5 Years	5 Years
Next Business Day Replacement	5 Years	5 Years
Free Technical Support*	90 Days	90 Days
Professional Configuration and Setup Support (remote)	PSB0304-10000S	PSB0304-10000S
ProSUPPORT OnCall 24x7 Support	PMB0311-10000S, 1-year contract PMB0331-10000S, 3-year contract PMB0351-10000S, 5-year contract	PMB0311-10000S, 1-year contract PMB0331-10000S, 3-year contract PMB0351-10000S, 5-year contract
Free VPN Access	BR500 Router comes with one (1) free remote VPN access (valid with one (1) BR500 router in one VPN group)	BR500 Router comes with one (1) free remote VPN access (valid with one (1) BR500 router in one VPN group)
ORDERING INFORMATION	BR500	BRK500
North America	BR500-100NAS	BRK500-100NAS
Europe	BR500-100UKS	BRK500-100UKS
	BR500-100PES	BRK500-100PES
Asia Pacific	BR500-100JPS	BRK500-100JPS
	BR500-100AUS	BRK500-100AUS
BUSINESS ROUTERS		
	BR500	
	(1) Insight Instant VPN Router (1) Ethernet Cable (1) Install Guide (1) Warranty Card	
	BRK500	
	(2) Insight Instant VPN Routers (1) Ethernet Cable (1) Install Guide (1) Warranty Card	

*This product comes with a limited warranty that is valid only if purchased from a NETGEAR authorized reseller, and covers unmodified hardware, fans and internal power supplies - not software or external power supplies, and requires product registration at <https://www.netgear.com/business/registration> within 90 days of purchase; see <https://www.netgear.com/about/warranty> for details. Intended for indoor use only.

**The NETGEAR OnCall 24x7 contract provides unlimited phone, chat and email technical support for your networking product.

NETGEAR, the NETGEAR Logo, and NETGEAR Insight are trademarks of NETGEAR, Inc. in the United States and/or other countries. Other brand names mentioned herein are for identification purposes only and may be trademarks of their respective holder(s).

NETGEAR, Inc. 350 E. Plumeria Drive, San Jose, CA 95134-1911 USA, 1-888-NETGEAR (638-4327), E-mail: info@NETGEAR.com, www.NETGEAR.com

DS-BR500/BRK500-19Nov19